

LANDSCAPE ARCHITECTURE

Change the Way People See the World

An Exciting Career that Mends Creative & Environmental Sensibilities

Landscape architects transform the world around them, creating beautiful spaces from natural and built environments and improving the quality of people's lives. Their work involves analysis, design, problem solving, environmental stewardship, and aesthetic considerations—all bound together in the effort to create spaces that are functional, attractive, and sustainable. Landscape architects design everything from small urban parks, bike paths, and recreational areas to college campuses, shopping centers, and golf courses.

A working landscape architect must have an extensive knowledge of design theory, great technical competence, and possess a commitment to the stewardship and conservation of natural, constructed, and human resources. They are involved in managing and understanding information, facilitating decision making, and assuming leadership in advocating conservation, environmental sustainability, and resource management. Landscape architects interface with the fields of architecture, engineering, traffic management, interior design, and behavioral and environmental sciences. The professional concerns of today's landscape architects include some of the most pressing social and environmental challenges of our time.

Start a Career in a Rising Field

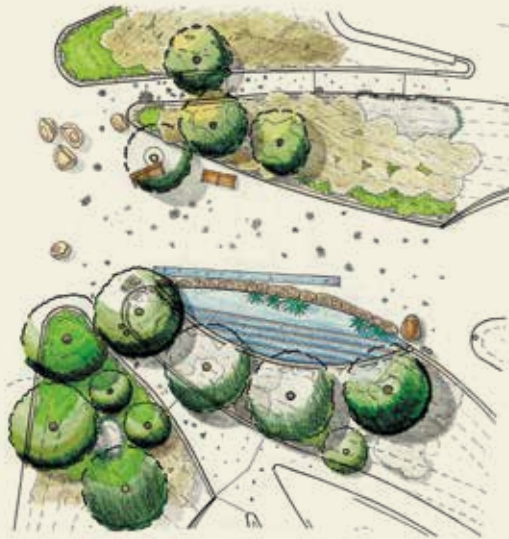
Landscape architecture is a growing, dynamic field with plenty of career opportunities for qualified professionals. Environmental and conservation concerns, urban planning needs, the desire to create functional and beautiful public spaces, and the increasing need to take greater care in preserving natural areas means that landscape architects have plenty of opportunities to make a lasting difference. Graduates from UCLA Extension's program are typically presented with great employment prospects and a successful landscape architect can earn a six-figure salary within five-to-ten years of starting out in the profession.



This page—Michael Murray, 2011 Graduate. Next page—(Top to Bottom) Patricia Fontes; Helaleh Behbahani, 2015 Graduate

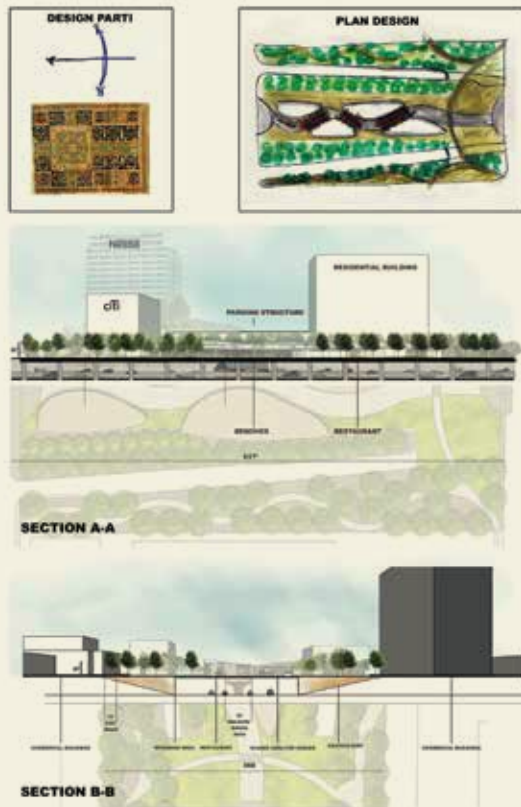
Choose Landscape Architecture at UCLA Extension

UCLA Extension's three-year Landscape Architecture Certificate program is designed for working professionals who already have at least a bachelor's degree. It is a rigorous program that prepares students to enter the field of landscape architecture upon completion of the curriculum.



Benefits of the program include:

- Program sequence can be completed in just three years
- A unique alternative to traditional degree programs—night and weekend courses cater to working adults
- Distinguished instructors—all practicing professionals in landscape architecture, architecture, or fine arts
- Real-world projects—assignments focus on real sites, solutions, and clients
- Financial aid—students with a bachelor's degree can request federal financial aid
- Meets educational requirements for licensure in California as approved by the Landscape Architects Technical Committee under the California Architects Board
- International students are eligible for a visa through the program
- Courses are offered in Westwood and downtown Los Angeles



Philosophy & Curriculum

The Landscape Architecture Certificate program is designed to give students a strong foundation in the design, technical, and theoretical aspects of the discipline. The curriculum is structured as a sequence of design, technical, and breadth courses. The goal of the program is to integrate these three areas into a single body of knowledge so that each segment is understood in the context of its relevance to the others.

A grade of “C+” is required to successfully complete a course. Students must maintain a “B” average to receive the certificate. Courses must be taken for letter grade to count toward the certificate.



Course of Study

The first year core sequence develops basic drawing, drafting, design principles, and hand and digital graphic skills. The design sequence places a strong emphasis on design basics, theory, and site planning. At the end of the first year, students sit for a formal portfolio review with instructors and alumni as panelists.

The second year core sequence introduces increasingly complex design issues and methodologies. A parallel technical sequence introduces plant materials, CAD, grading and drainage, irrigation and environmental and natural systems into the design sequence problems. The second year builds essential knowledge, sensitivity, and skill, addressing the impact of social, historical, and natural phenomena on the design process while providing training in practical skills and techniques. A second portfolio review assesses the progress and competency of the student to move forward with a capstone project.

The final year within the program focuses on the packaging of skills with the construction documentation of a design, focusing on design materials, methods, construction documents and professional ethics and practices. The understanding of human factors in design, and final design studio, prepare the student for the final design capstone project. The capstone project is a student-selected design problem and site. This is then researched, analyzed, designed, defended, and formally presented along with a written project booklet.

Design Studios

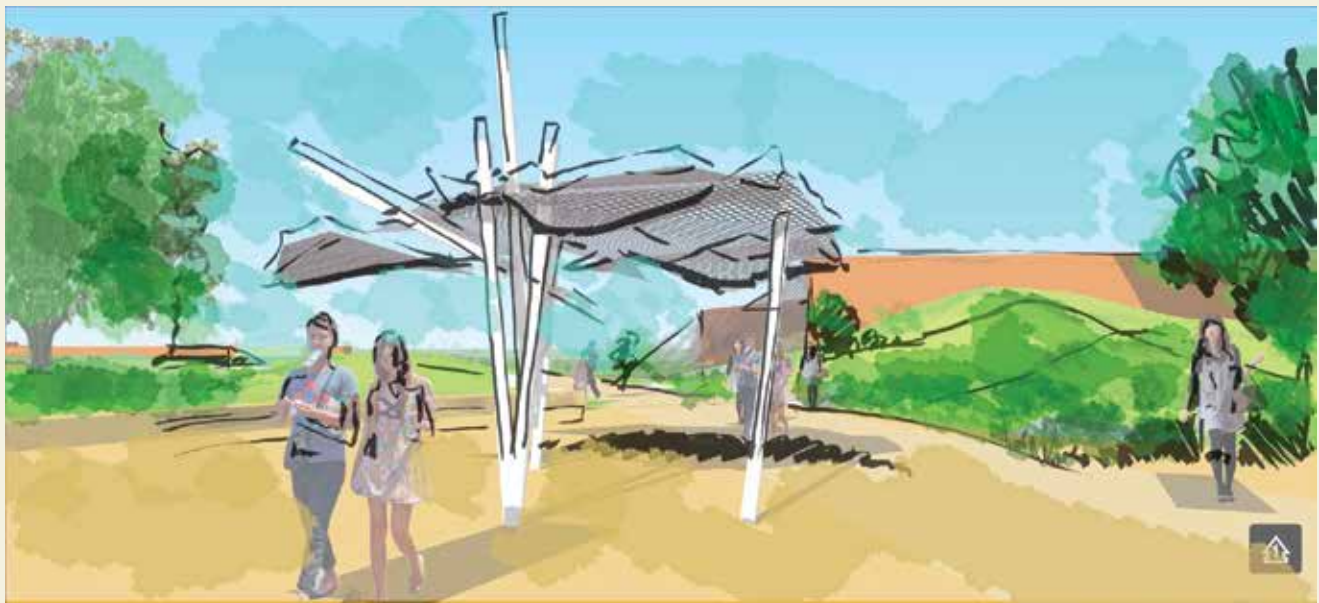
- Design Theory
- Applied Theory
- Environmental Analysis and Planning
- Planting Design
- Concept Development
- Advanced Design Studios
- Capstone Project

Technical Studios

- Basic Drawing and Drafting
- Digital Graphic Communication
- AutoCAD
- Grading and Drainage
- Plant Materials
- Irrigation Practices and Water Conservation
- Construction Methods and Materials
- Construction Drawing and Documentation

Breadth Courses

- Introduction to the Landscape Design Professions
- History
- Professional Practices
- Human Factors
- Graphic, Written, and Oral Communication
- Natural and Human Systems



General Information

Facilities

Classes are held on the UCLA campus, in the UCLA Extension-dedicated studios in Westwood Village, and in downtown Los Angeles at the DTLA Center. The UCLA Extension 1010 Westwood Center provides a vibrant learning environment with classrooms, studios, labs, counseling offices, and shared critique and gallery spaces. The facility houses a specialized landscape architecture library of basic texts and references. Occasionally, classes are held at other locations and sites. Plant materials classes are organized as field trips, meeting in nurseries, gardens, arboreta, and other designed sites in Southern California.

Students are also eligible to access ancillary campus services and resources such as museums, bookstores, restaurants, exhibits, numerous libraries, and special collections.

Student Community

The Student Chapter of the American Society of Landscape Architects at UCLA Extension (SCASLA), active since 1977, functions as a liaison between the student body and the program administration, and sponsors lectures, workshops, and social events. Each summer SCASLA mounts an extensive exhibit of current student work, inviting the public and professionals. In 1988, SCASLA was chartered as a student chapter of the American Society of Landscape Architects (ASLA), becoming the first student organization at a non-degree granting institution in the country.

Admissions

Formal admission to candidacy in the program is required to enroll in landscape architecture courses and participate in program activities past the second quarter. A bachelor's degree in any field from an approved institution, a completed Application for Candidacy form (available online and in the program office), and payment of a candidacy fee are required for admission. The candidacy fee is valid for three years.

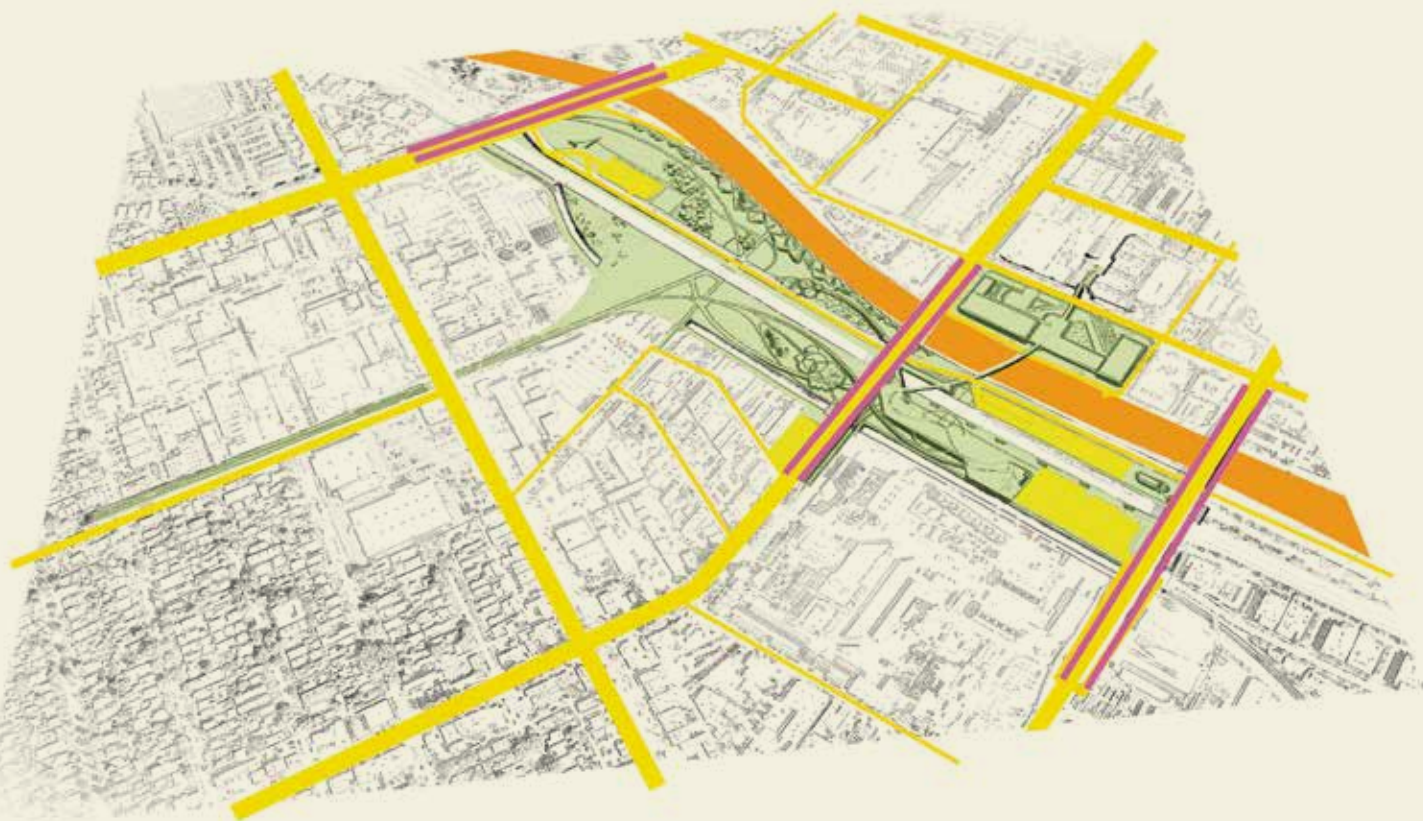
Once admitted, candidates are entitled to the program's yearly advising service, advance notice of quarterly course offerings, and library privileges. Membership in the Student Chapter of ASLA is automatic for all students.

Fees & Financial Assistance

Information about fees, projected course costs, and completion rates, can be found at uclaextension.edu/CF672.

The program provides opportunities for students to work in the landscape architecture library and as teaching assistants. These openings and qualifications are advertised on the program's website: landarch.uclaextension.edu.

There are several Extension-wide financial aid programs and scholarships available to assist students with their education. For complete information and guidance, call the Financial Aid Office at **(310) 825-9601**, or email finaid@uclaextension.edu.



For More Information

Phone: (310) 825-9414

Email: landscapearchitecture@uclaextension.edu

Web: landarch.uclaextension.edu

UCLA

Gene Block, Chancellor

UCLA Extension

Wayne Smutz, Dean

Department of the Arts

Linda Venis, Director

Landscape Architecture Program

Stephanie Landregan, FASLA, Program Director

Melissa McDonald, Program Manager

UCLA Extension policies and procedures regarding enrollment, refunds, parking, records, etc. are published in the quarterly Extension catalogs and are available online.

